

ROXUL[®]

The Better Insulation[™]

INSULATION FOR AN
**ENERGY EFFICIENT,
QUIET & SAFE HOME**



**Fire
Resistant**



**Water
Repellent**



**Made
from Stone**



A GLOBAL LEADER

Roxul Inc. is part of Rockwool International, the world's largest producer of stone wool insulation – a material that improves the quality of life for millions of people. Rockwool operates **21 factories on 3 continents**. In North America, Roxul is the leading manufacturer of stone wool insulation products, with operations on both sides of the continent.

Roxul's unique thermal insulation products provide indoor comfort in summer and winter, and help reduce heating and cooling costs. Those energy savings also translate into reduced CO₂ emissions.

THE CHOICE OF PROFESSIONALS

Many contractors and homeowners insist on Roxul's **ComfortBatt™** and **Safe'n'Sound™** residential products for the **advantages they offer over conventional insulations**. Roxul also produces the insulation products used in some of the most demanding commercial building projects and industrial environments. That includes the insulation used to **reduce the noise levels inside** major airports, and the fire-resistant insulation used to protect commercial apartments and office buildings – and the people who occupy them.



INSULATION THAT'S PLANET-FRIENDLY



Roxul is a member of the Canada Green Building Council (CaGBC) representing environmental responsibility & sustainability



**CFC &
HCFC Free**

CFC- and HCFC-free, so they don't deplete the earth's protective ozone layer.



Roxul insulation has received GreenGuard's most stringent certification for indoor air quality.



**Recycled
Content**

Roxul insulation products are made from natural stone and up to 93% recycled materials.

THE ROXUL DIFFERENCE

Roxul ComfortBatt™ and Safe'n'Sound™ offer far more than conventional insulations. Don't settle for anything less when you build or renovate:



Fire Resistant

In the event of a fire, every second counts. Roxul insulation helps **protect you and your family by delaying the spread of fire**. Made from stone, Roxul products can withstand temperatures up to 2150 °F.



Water Repellent

Roxul insulation repels water, so R-value is not affected. It is also **completely resistant to rot, mildew, mold, and bacterial growth** – contributing to a safer indoor environment in your home.



Made from Stone

Roxul insulation is made from natural stone and recycled material. Its **non-directional fiber structure and higher density** give it better dimensional stability and make it an **effective barrier against noise**.



INSULATE TO SAVE ENERGY



An **energy efficient** house is a better home. With **Roxul ComfortBatt™** insulation, it's also a **more comfortable living environment** for you and your family. Roxul ComfortBatt helps keep the outside outside, to keep your home warm in the winter, and cool in the summer. That also translates into **reduced heating and air conditioning costs** – and a house that is easier on the environment.

R-value is the measurement of an insulation's ability to prevent heat flow. The higher the R-value, the more insulating power it provides. Roxul ComfortBatt is available in R14, R22, R28 and R32 to **deliver top thermal performance**. Additionally, while moisture significantly reduces the R-value of many other popular insulation materials, **Roxul ComfortBatt does not store or transfer moisture** so the R-value you install will remain the same year after year.

INSULATE FOR A QUIET HOME

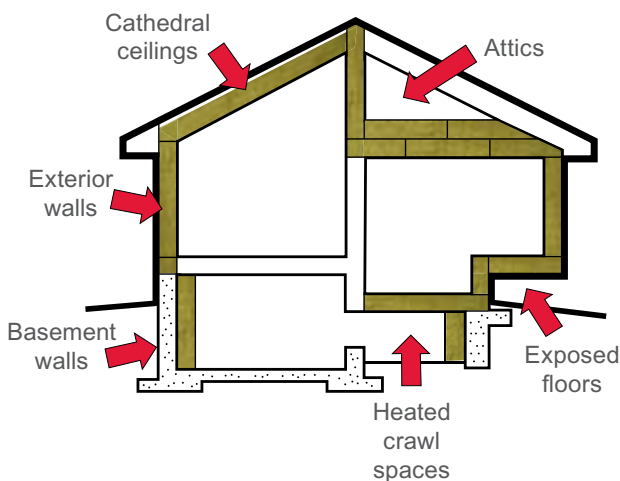


Nothing beats the **tranquility** of a quiet home – and that's exactly what **Roxul Safe'n'Sound™** provides. It's an innovative, **high density insulation** that's specifically **designed to absorb sound and reduce noise from traveling from one room to another**. Unlike thermal insulation, Roxul Safe'n'Sound is used for **soundproofing interior walls and for ceilings between rooms**. Made from stone wool, Roxul Safe'n'Sound reduces sound transmission by trapping sound waves and vibrations in the thousands of tiny interconnected spaces created by its unique fiber structure.

Roxul Safe'n'Sound is made from stone, so it provides an extra barrier of safety – **fire resistance**. In the event of a house fire, it helps slow the spread, and can provide precious **extra minutes for a safe escape**.

MAXIMIZE THE COMFORT

Roxul ComfortBatt™ installed in exterior walls is a great way to save energy, but there are other applications that can make a big difference in your home's comfort. Insulating the exposed concrete walls in basements and heated crawl spaces, as well as increasing the insulation in your attic are all effective ways to improve your home's energy efficiency.



THE IMPORTANCE OF VAPOR BARRIERS

A vapor barrier/retarder may be required to **control vapor transmission** and **minimize condensation** in walls and ceilings. While many professional contractors feel that polyethylene is the best choice, you should always consult your local building code when you're doing the work yourself.



ROXUL

Comfort Batt

Thermal Home Insulation



WOOD STUD

R14-16" ON CENTER

Covers:	59.7 pi ² (5.55 m ²)
Length:	47 in. (1194 mm)
Width:	15 3/4 in. (387 mm)
Thickness:	3 1/2 in. (89 mm)

12 BATTS



R14-24" ON CENTER

Covers:	60.1 pi ² (5.58 m ²)
Length:	47 in. (1194 mm)
Width:	23 in. (584 mm)
Thickness:	3 1/2 in. (89 mm)

8 BATTS



R22-16" ON CENTER

Covers:	39.8 pi ² (3.70 m ²)
Length:	47 in. (1194 mm)
Width:	15 3/4 in. (387 mm)
Thickness:	5 1/2 in. (140 mm)

8 BATTS



R22-24" ON CENTER

Covers:	37.5 pi ² (3.48 m ²)
Length:	47 in. (1194 mm)
Width:	23 in. (584 mm)
Thickness:	5 1/2 in. (140 mm)

5 BATTS



R24-16" ON CENTER

Covers:	29.4 pi ² (2.73 m ²)
Length:	47 in. (1194 mm)
Width:	15 in. (381 mm)
Thickness:	5 1/2 in. (140 mm)

6 BATTS



R24-24" ON CENTER

Covers:	29.7 pi ² (2.76 m ²)
Length:	47 in. (1194 mm)
Width:	22 3/4 in. (578 mm)
Thickness:	5 1/2 in. (140 mm)

4 BATTS



ROXUL

Comfort Batt™

Thermal Home Insulation



WOOD STUD

R28-16" ON CENTER

Covers:	29.9 pi ² (2.78 m ²)
Length:	47 in. (1194 mm)
Width:	15 1/4 in. (387 mm)
Thickness:	7 1/4 in. (184 mm)

6 BATTS



R28-24" ON CENTER

Covers:	30.7 pi ² (2.85 m ²)
Length:	47 in. (1194 mm)
Width:	23 in. (584 mm)
Thickness:	7 1/4 in. (184 mm)

4 BATTS



R32-16" ON CENTER

Covers:	29.9 pi ² (2.78 m ²)
Length:	47 in. (1194 mm)
Width:	15 1/4 in. (387 mm)
Thickness:	8 in. (203 mm)

6 BATTS



R32-24" ON CENTER

Covers:	30.0 pi ² (2.79 m ²)
Length:	47 in. (1194 mm)
Width:	23 in. (584 mm)
Thickness:	8 in. (203 mm)

4 BATTS



STEEL STUD

R10-16" ON CENTER

Covers:	86.7 pi ² (8.05 m ²)
Length:	48 in. (1219 mm)
Width:	16 1/4 in. (413 mm)
Thickness:	2 1/2 in. (63.5 mm)

16 BATTS



R10-24" ON CENTER

Covers:	97 pi ² (9.01 m ²)
Length:	48 in. (1219 mm)
Width:	24 1/4 in. (616 mm)
Thickness:	2 1/2 in. (63.5 mm)

12 BATTS



ROXUL

Comfort Batt™

Thermal Home Insulation



STEEL STUD

R14-16" ON CENTER

Covers:	65 pi ² (6.03 m ²)
Length:	48 in. (1219 mm)
Width:	16¼ in. (413 mm)
Thickness:	3.5 in. (89 mm)

12 BATTS



R14-24" ON CENTER

Covers:	64.7 pi ² (6.01 m ²)
Length:	48 in (1219 mm)
Width:	24¼ in. (616 mm)
Thickness:	3½ in. (89 mm)

8 BATTS



R22.5-16" ON CENTER

Covers:	43.3 pi ² (4 m ²)
Length:	48 in. (1219 mm)
Width:	16¼ in. (413 mm)
Thickness:	6 in. (152.4 mm)

8 BATTS



R22.5-24" ON CENTER

Covers:	40.4 pi ² (3.75 m ²)
Length:	48 in. (1219 mm)
Width:	24¼ in. (616 mm)
Thickness:	6 in. (152.4 mm)

5 BATTS



R24-16" ON CENTER

Covers:	43.3 pi ² (4 m ²)
Length:	48 in. (1219 mm)
Width:	16¼ in. (413 mm)
Thickness:	6 in. (152.4 mm)

8 BATTS



R24 - 24" ON CENTER

Covers:	40.4 pi ² (3.75 m ²)
Length:	48 in. (1219 mm)
Width:	24¼ in. (616 mm)
Thickness:	6 in (152.4 mm)

5 BATTS

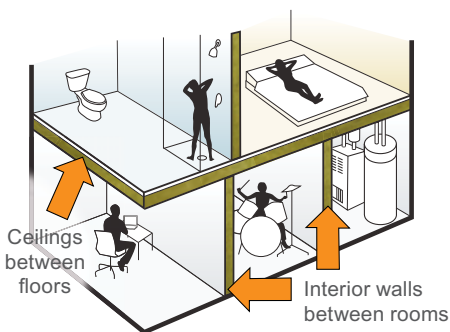


MAXIMIZE THE PEACE & QUIET

Installing **Roxul Safe'n'Sound™** inside interior walls, and in ceilings between floors is a great way to **reduce sound transmission** and **improve fire resistance**. Higher density batts more effectively reduce air flow thereby decreasing sound transmission.

Typical applications include:

- Bedrooms
- Bathrooms
- Home Offices
- Home Theater Rooms
- Basements
- Furnace/Laundry Rooms



Interior Walls

(Wood Studs – 16 in. On Center)
Using Roxul Safe'n'Sound,
5/8 in. drywall (type x) and resilient
channels at 16 in. provides:

Fire Rating: 1 hour
Sound Transmission Class
(STC): 45

*Ask your building supply retailer
about the benefits of using resilient
channels for your project.*



Interior Walls

(Steel Studs – 24 in. On Center)
Using Roxul Safe'n'Sound,
5/8 in. drywall (type x)

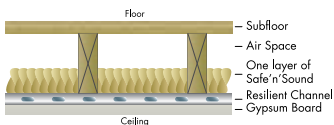
Fire Rating: 1 hour
Sound Transmission Class
(STC): 52



Interior Ceilings/Floors

(2 x 10 Joists – 16 in. on Center)
Using Roxul Safe'n'Sound,
5/8 in. drywall (type x) and
resilient channels at
24 in. provides:

Fire Rating: 30 minutes
Sound Transmission Class (STC): 47



** To meet a sound reduction rating of STC 49, and fire rating of 45 minutes,
two layers of Safe'n'Sound must be used.*

ROXUL

Safe'n'Sound™

Fire & Soundproofing Insulation



WOOD STUD

16" – WOOD ON CENTER

Covers:	59.7 pi ² (5.55 m ²)
Length:	47 in. (1194 mm)
Width:	15¾ in. (387 mm)
Thickness:	3 in. (76 mm)

12 BATTS

24" – WOOD ON CENTER

Covers:	60.1 pi ² (5.58 m ²)
Length:	47 in. (1194 mm)
Width:	23 in. (584 mm)
Thickness:	3 in. (76 mm)

8 BATTS

HOW MUCH
YOU'LL NEED

HOW MUCH
YOU'LL NEED

STEEL STUD

16" – STEEL ON CENTER

Covers:	64.0 pi ² (5.95 m ²)
Length:	48 in. (1219 mm)
Width:	16¾ in. (413 mm)
Thickness:	3 in. (76 mm)

12 BATTS

24" – STEEL ON CENTER

Covers:	64.0 pi ² (5.95 m ²)
Length:	48 in. (1219 mm)
Width:	24¾ in. (584 mm)
Thickness:	3 in. (76 mm)

8 BATTS

HOW MUCH
YOU'LL NEED

HOW MUCH
YOU'LL NEED



EASY TO INSTALL



Working with Roxul insulation is a breeze. It cuts quickly and accurately with a serrated knife, such as a bread knife so you can easily achieve optimal fit around pipes, electrical boxes, wiring, ductwork, and between studs and joists that are less than a standard width.



Insert. Compress. Release.

Those three simple steps are all it takes to get a snug fit. That great fit is one of the reasons Roxul ComfortBatt™ delivers maximum R-value and energy savings, and why Roxul Safe'n'Sound™ is so effective at bringing peace and quiet to your home. Unlike some conventional insulation, Roxul won't slump or settle inside your walls over time.

Insist on Roxul for your next renovation project. It's available at quality building supply retailers near you.



Conventional
Insulation



Roxul
Insulation

For additional information,
visit www.roxul.com

ROXUL®
The Better Insulation™



551 Harrop Drive, Milton, Ontario L9T 3H3
1-800-265-6878 or 905-878-8474

ROX-2379_0312